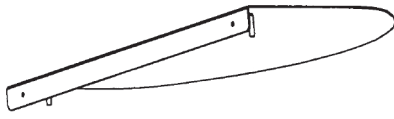


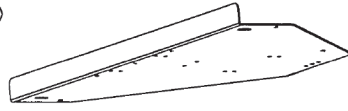
UPLIFT DESK[®] Corner Sleeve

UPL143

Package contents



Corner sleeve (top)



Corner sleeve (bottom)



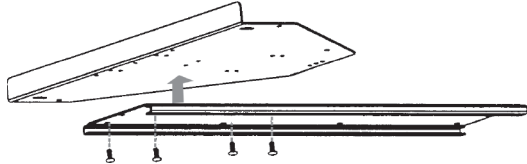
10-32 x 3/8"
Machine screws
(qty 10)



10-11 x 5/8"
Wood screws
(qty 5)

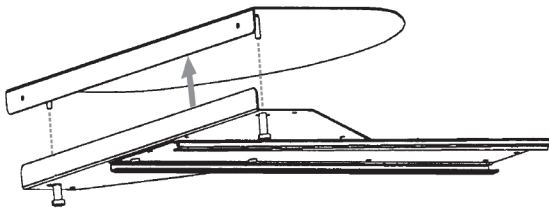


Barrel nuts
(qty 2)



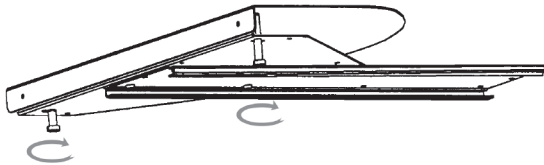
Step 1

Use four (4) Machine screws to attach the track from your keyboard tray to the bottom half of the Corner sleeve. (Keyboard tray track not included in this kit. Obtain it from your keyboard tray contents)



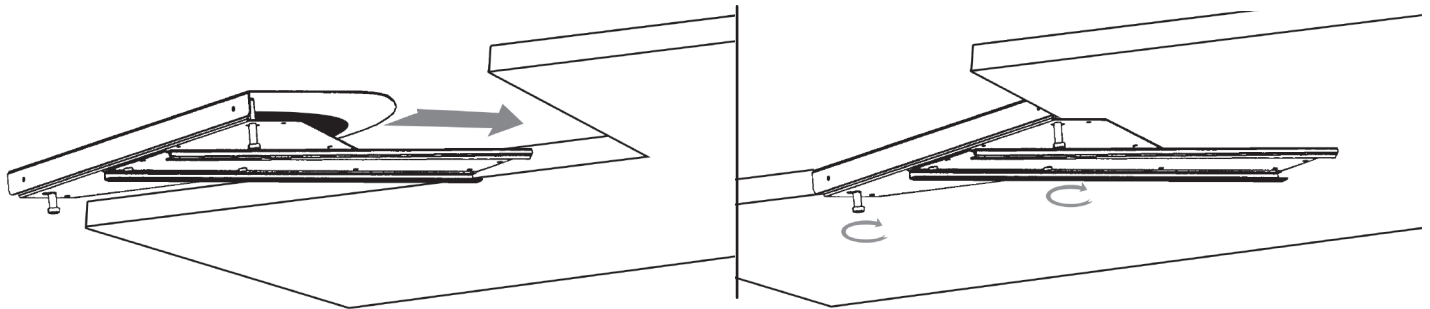
Step 2

Take the top-half of the Corner sleeve and lower it onto the bottom half. Tighten the Barrel nuts loosely. Do not tighten the Barrel nuts all the way until Step 3.



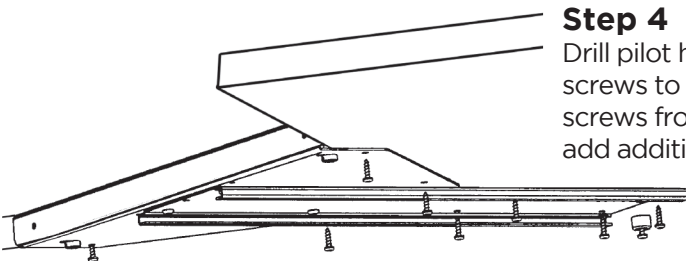
Step 3

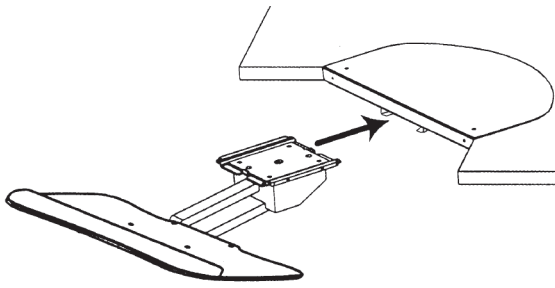
Slide the Corner sleeve onto the corner of the desktop where you want it. Once it is in place, tighten the Barrel nuts to secure it in place.



Step 4

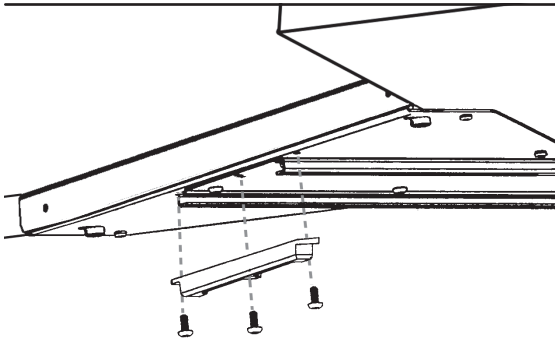
Drill pilot holes (1/8" wide; 5/8" deep) then use the five (5) Wood screws to firmly attach the sleeve and track onto the desktop. Use the screws from your keyboard tray kit to attach the rear bumper and to add additional stability.





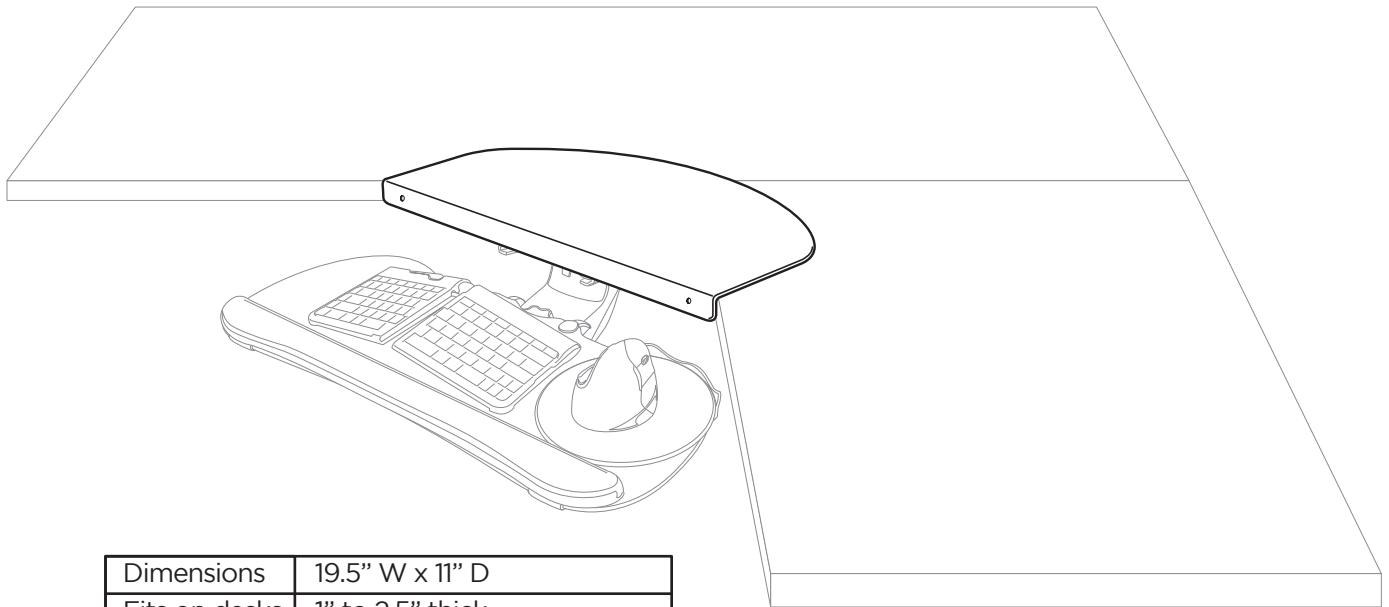
Step 5

Slide your keyboard tray mechanism onto the track. (keyboard tray mechanism not included in this kit. Obtain it from your keyboard tray contents)



Step 6

Use three (3) Machine screws to attach the front bumper to the keyboard tray track, to prevent your keyboard tray mechanism from sliding forward off the track. There should be three (3) extra Machine screws left for future use.



Dimensions	19.5" W x 11" D
Fits on desks	1" to 2.5" thick
Materials	Black powder-coated steel
Warranty	5 years

© **Copyright Notice:** These instructions are a component of the UPLIFT Corner Sleeve. These instructions are part of the scope of delivery, even if the item is resold. These instructions are also available on the UPLIFT Desk website: upliftdesk.com. Excerpts or copies may not be forwarded to third parties or used in any other published form without the prior written consent of UPLIFT Desk.
These instructions are subject to United States copyright law.