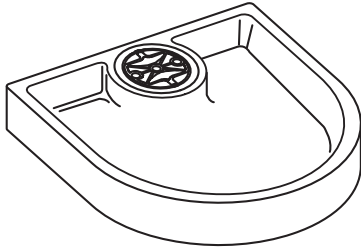


UPLIFT DESK®

Small Half Circle Desk Drawer STR005

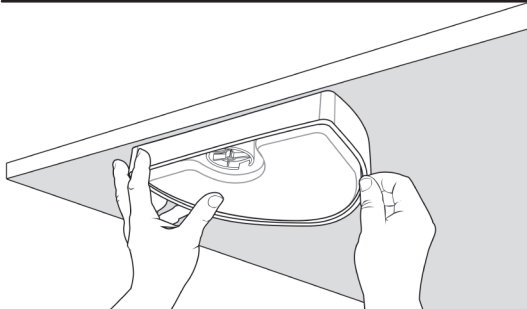
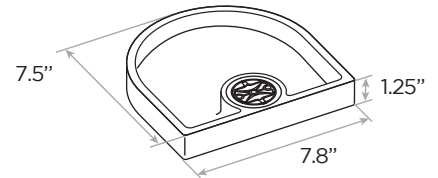
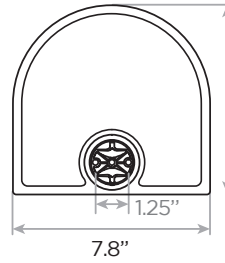
Package contents



Drawer



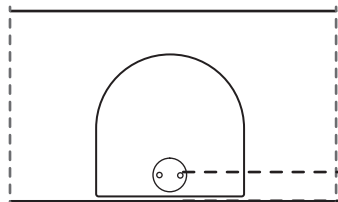
Screws
(qty 2)



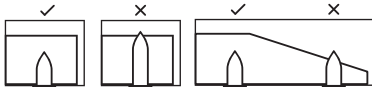
Step 1

Position drawer under desk to find the best location and verify the fit. There should be enough space for the whole drawer to fit when closed.

See diagrams below to determine the best mounting location for desks with rectangular edges and desks with curved edges.



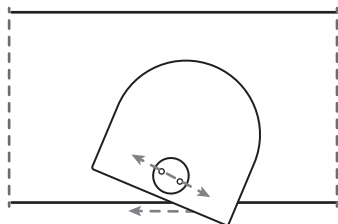
Setback to Screws
 Typical: 1 1/2"
 Minimum: 1 1/8"
 Maximum: 1 3/4"



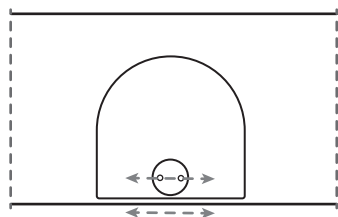
Step 2

Rotate the drawer open and closed to decide exactly where to mount the drawer. It should be back enough to look good when closed, and forward enough to provide access to the compartments of the drawer.

CAUTION: Make sure the length of included screws don't puncture the desktop surface. Insert screws into the holes on the drawer then hold them up to the edge of the desktop surface. If you have a desktop with a slanted front edge like the UPLIFT Eco Curve tops, the front edge will be thinner than the rest of the desk and unsuitable for mounting your drawer. Move your drawer farther back or to the side to avoid puncture. **Do not attempt to insert screws into your desk without ensuring the screws are not too long.**



Holes
misaligned



Holes correctly
aligned

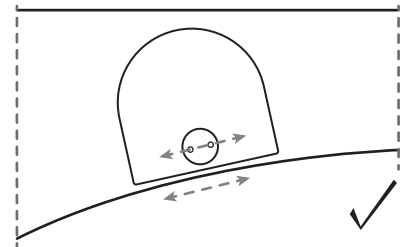


Step 3

Ensure that the screws are aligned parallel with the front edge of the desktop.

Although the drawer rotates 360°, it has "open" and "closed" positions at the 180° points. If the screws are parallel with the front edge of the desk, its "open" and "closed" positions will be flush with the desk edge. If they are at an angle, the corner of the drawer will jut out.

Keep this in mind if your drawer is mounted along a curve. Keep the screws as parallel to the curved edge as possible to avoid it jutting out (see image at right).



CAUTION: Read all instructions before assembly. Failure to assemble properly may result in product damage or injury.