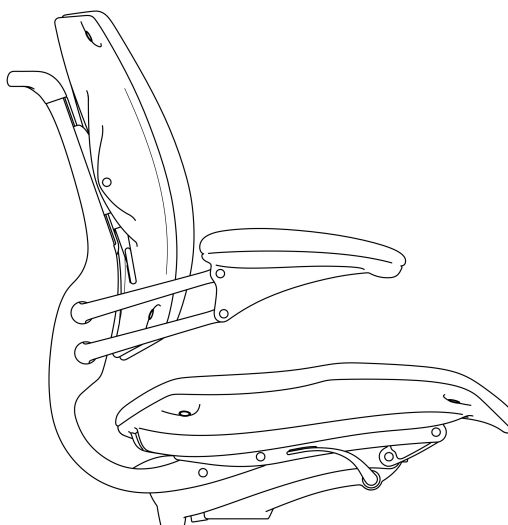




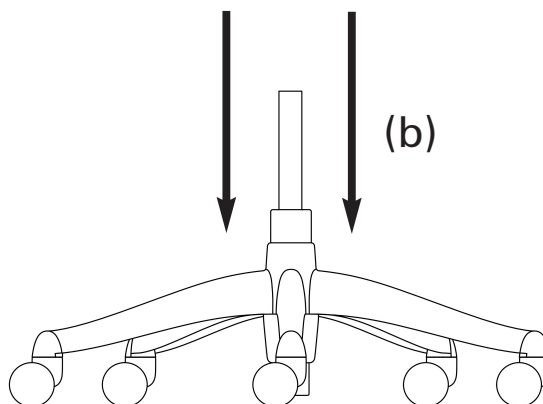
Upper Chair  
Assembly

(a)



Chair Base

(b)



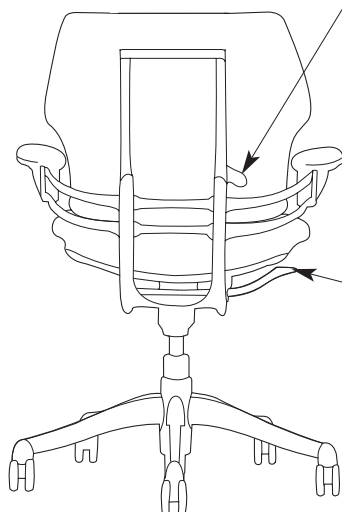
1. Open carton and remove chair base from shipping tray.
2. Place chair base on the floor in an upright position.
3. Remove upper chair assembly from carton by using handle on chair back. (a)
4. Slide hole located on bottom side of upper chair assembly onto cylinder. (b)
5. Press down firmly on seat cushion.
6. Sit in chair for final assembly.

By reducing the size of our packaging,  
we are helping to conserve our natural resources.



## Backrest/Lumbar Support Height

While seated, grasp backrest with both hands on lower corners. Squeeze handle at right with fingertips and move backrest to most comfortable height.

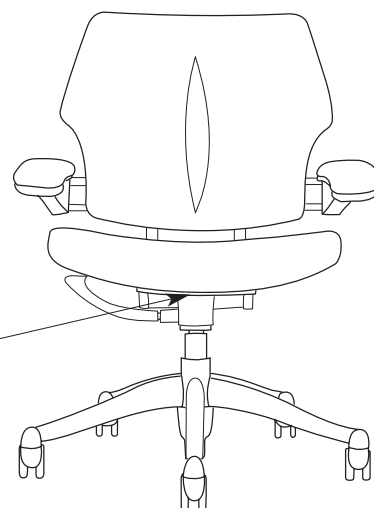


## Seat Height

Lift up on lever under right side of seat cushion and position chair to desired height.

## Seat Depth

Lift up on lever under forward edge of seat, and slide seat to desired position.

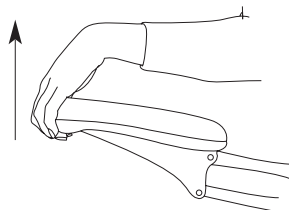


## Synchronous Armrests

Both of the gel-cushioned armrests on Freedom can be adjusted synchronously with one hand, without touching any release buttons.

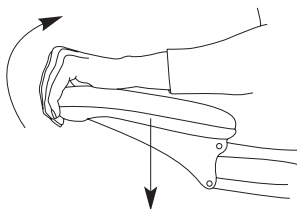
### To Raise

Gently pull upward on the armrests and raise to desired position. They will automatically lock in place when released.



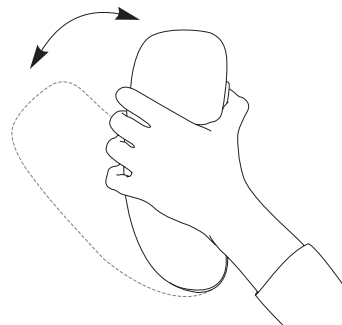
### To Lower

Lift up on front edge of armrests to disengage. Lower to desired position. The armrests will automatically lock in place when released.

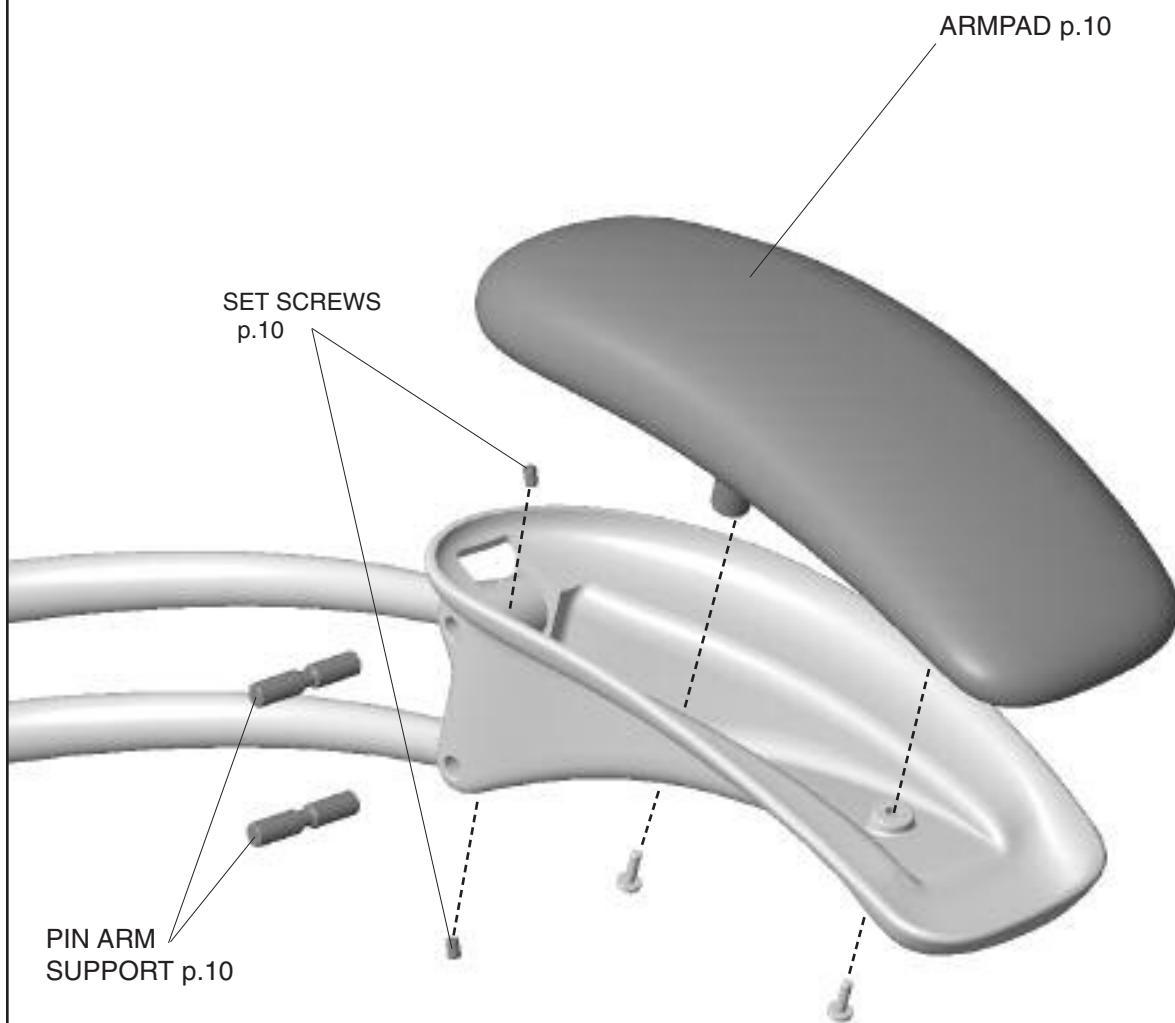


## Advanced Armrests (Optional)

Depress the button on the side of Freedom's optional pivoting armrests inward to move the armrests to any position within a 35° arc of motion. The armrests will lock in place when released.



**FIG. 1**



*freedom*<sup>™</sup>



## ARM SUPPORT AND ARMPAD REPLACEMENT

**TOOLS NEEDED:** 5/64" or 3/32" Allen Wrench, T-20 Torx Screwdriver

### Armpad Replacement

*Estimated Repair Time: 2 mins. per armpad.*

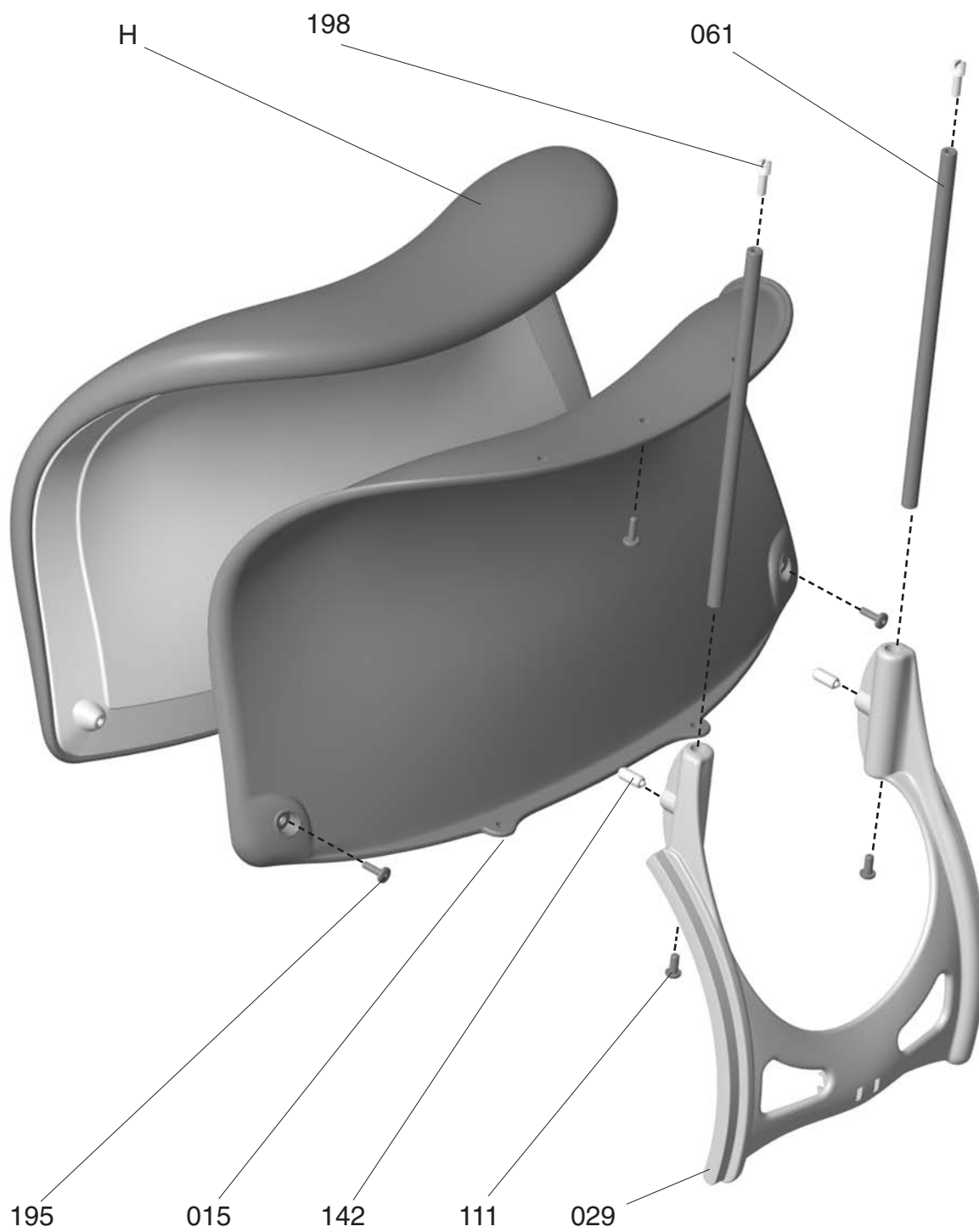
1. Raise the arms to their top position.
2. Remove the two screws retaining the armpads.
3. Install new armpads
4. Replace the two screws.

### Arm Support Replacement

*Estimated Repair Time: 5 mins. per arm support.*

1. Raise the arms to their middle position
2. Loosen the set screws retaining the pins in the lower arm until they are flush with the arm casting.
3. Remove the pivot pins.
4. Loosen the set screws in the upper arm by pivoting the arm supports until there is sufficient clearance for the allen wrench to reach into the set screws.
5. Remove the pivot pins.
6. Install the new arm supports by lining up the holes in the upper arm with the upper holes in the arm support and inserting the pivot pins. Tighten the set screws in the upper arm.
7. Line up the holes in the lower arm with the lower holes in the arm support and insert the pivot pins.
8. Tighten the set screws in the lower arm.

## HEADREST SUPPORT ASSEMBLY





## PARTS

Number	Description	Quantity Per Assembly	Unit Price <sup>†</sup>	Comments
R35 - 015 - 10001	Shell Headrest, Graphite	1	16.00	
R35 - 015 - 10002	Shell Headrest, Titanium	1	16.00	
R35 - 029 - 10001	Moving Support, Graphite	1	30.00	
R35 - 029 - 10002	Moving Support, Titanium	1	30.00	
R20 - 061 - 10000	Rod, Headrest	2	1.50	
R04 - 111 - 10000	Screw, Socket, BTN HD 8-32 x 3/8	2	0.20	
R40 - 142 - 10000	Spring Plunger - Headrest	2	0.30	
H - abbb* F	Upholstery, Headrest, Gr. 1 Textile, Foam	1	60.00	
H - abbb* F	Upholstery, Headrest, Gr. 2 Textile, Foam	1	70.00	
H - abbb* F	Upholstery, Headrest, Leather 1, Foam	1	175.00	
H - abbb* F	Upholster y, Headrest, Leather 2, Foam	1	230.00	
R04 - 195 - 10000	Scr ew, Pan HD, Hi-Lo T orx #10 x 1/2	3	0.15	
R20 - 198 - 10000	Barb Fastener	2	2.20	

\* Where a = Textile Code (W, V, S, L or P) (see p.49)  
Where bbb = Color Code (see p. 49)

† Note: All part numbers and prices are for single units only.

### Headrest Rod Replacement

1. Remove three T20 screws securing the Headrest Cushion to the Headrest Shell.
2. Remove cushion from shell.
3. Slide the Headrest Shell to the highest position in the Moving Support.
4. Remove the two Allen screws on the bottom of the Headrest Rods.
5. Remove the two Barbed Fasteners from the top of the Headrest Rods.
6. Remove Headrest Shell.
7. Slide rods though the Moving Support until the tops are about 10mm into it and stop.
8. Push the new rods against the old rods and drive them though the Moving Support.  
\*\*\*\* They must be removed this way so as to keep the Spring Plunger from pushing  
though and jamming. \*\*\*\*
9. Re-assemble headrest in the reverse order of steps 6-1.